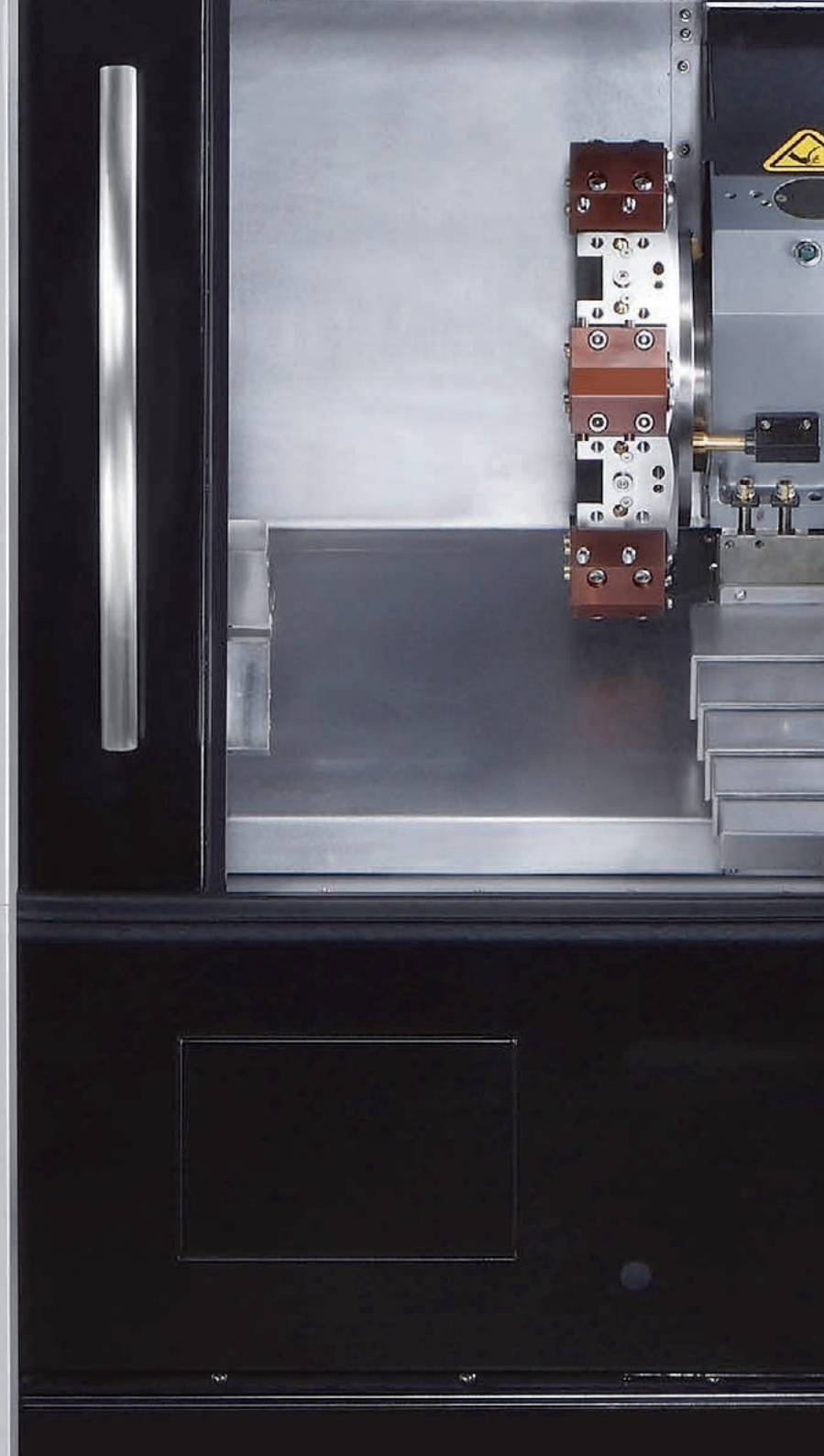




# Turning Centres

**MAX 5**

From print to  
part to profit



# TMi and TMXi

General purpose, heavy duty and high performance 2 axis lathes

- > TM6i XP
- > TM8i XP
- > TM10i XP
- > TM12i XP
- > TMX8i
- > TMX10i



## Benefits of the TMi Series

**TMi Series** – Quick job set-up, easy programming, large workspace and efficient chip management make the TMi series of slant-bed lathes ideal for small-batch production.

**Design and Construction** – A true slant-bed cast design promotes larger turning capacity and more efficient swarf removal. Extra wide linear guide ways are strategically spaced to provide excellent support to the cross slide. This additional stability provides greater component accuracy and improved surface finish.

**Hydraulic Turret** – Available on all models as slotted turret, or VDI. The hydraulic system is fast, precise, reliable and very rigid in construction.

**Tailstock** – Programmable quill and draggable via turret hitch on all models.

**XP Upgrade** – The new models designated as XP, include design improvements to the entire range, including roller guideways, faster rapids, increased spindle bore and draw-bar capacity. Plus, a smaller footprint. This all makes the TM range more compact and the highest performance yet.

## Benefits of the TMXi Series

**TMXi Series** – More horsepower, more torque, larger travels, faster rapids, faster acceleration and deceleration. This range of CNC turning centres is higher in specification and therefore more suited to a demanding production environment. The programmable tailstock gives greater flexibility for workpiece support. Larger, wide-spaced slideways allow for heavy duty cycles whilst maintaining outstanding accuracy and surface finish.

	TM6i XP	TM8i XP	TM10i XP	TM12i XP	TMX8i	TMX10i
<b>Working space</b>						
Max. turning diameter (mm)	316/215 VDI	356/256 VDI	450/304 VDI	510/395 VDI	355	415
Max. turning length (mm)	340/335 VDI	525/500 VDI	760/734 VDI	1,000/974 VDI	535	635
Chuck diameter (mm)	169	210	254	315	210 (option)	254 (option)
Bar Capacity (mm)	45	64.5	81	104	64.5	81
<b>Travels</b>						
X-Axis (mm)	176/168 VDI	203	250	305	203	232
Z-Axis (mm)	356	550	790	1,016	560	660
W-Axis (mm)	-	-	-	-	640	740
<b>Feeds</b>						
X/Z/W –Axis (m/min)	30/30/-	30/30/-	30/30/-	30/30/-	30/30/30	30/30/30
<b>Spindle Motor</b>						
Spindle power (KW) Max	13	23	22	55	28	28
Torque (Nm) Max @ (rpm)	113@1,090	219@1,000	350@600	606@870	241@1,100	350@759
<b>Spindle</b>						
Spindle Speed Max. (rpm)	6,000	4,000	3,000	2,800	4,500	3,500
Spindle Nose	A2-5	A2-6	A2-8	A2-11	A2-6	A2-8
<b>Turret</b>						
Type	Slotted Disc / VDI 20 option	Slotted Disc / VDI 30 option	Slotted Disc / VDI 40 option	Slotted Disc / VDI 40 option	Slotted Disc	Slotted Disc
Number stations	12	12	12	12	12	12
Tool index time/adjacent (sec)	0.5	0.5	0.5	0.8	0.4	0.4
<b>Further details</b>						
Machine weight (kg)	3,200	4,030	5,000	6,700	5,900	6,100

Further information and technical data on the product, see [www.hurco.co.uk](http://www.hurco.co.uk).  
Machines shown with options. Prices and information may change without notice.

# TM Mi

3 axis CNC lathes  
with driven tools

- > TM8Mi
- > TM10Mi
- > TM12Mi

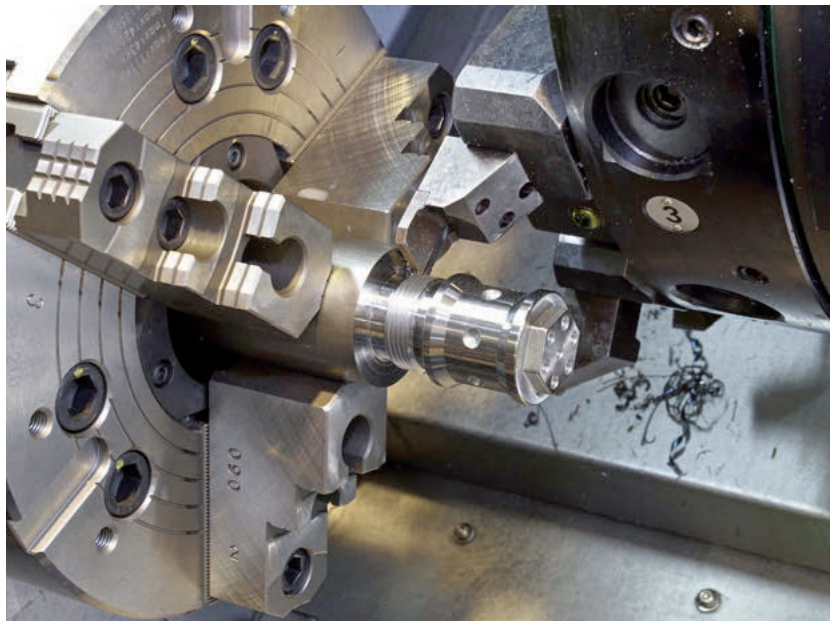


## Benefits of the TM Mi Series

**TM Mi Series Lathes** – Ideal for off-centre drilling and simple milling operations on a turned part. The Max 5 control allows quick and easy programming, whilst the VDI tooling ensures a rapid set-up and quick turnaround for small batch production.

**Design and Construction** – The Meehanite cast structure has excellent characteristics for damping and torsional strength. The wide saddle and oversized rails provide maximum static and dynamic stiffness.

**Servo Turret** – All TM Mi Lathes are fitted as standard with a fast, servo-driven, 12 station Duplomatic turret. VDI toolholders allow quick changes and excellent repeatability.



	TM8Mi	TM10Mi	TM12Mi
<b>Working space</b>			
Max. turning diameter (mm)	256	295	360
Max. turning length (mm)	497	740	937
Chuck diameter (mm)	210	254	305
Bar Capacity (mm)	64.50	81	104
<b>Travels</b>			
X-Axis (mm)	198	198	305
Z-Axis (mm)	550	790	1016
<b>Feeds</b>			
X/Z –Axis (m/min)	30/30	30/30	30/30
<b>Spindle Motor</b>			
Spindle power (KW)	22.6	40	40
Torque (Nm) Max @ (rpm)	264@817	520@734	743.5@514
<b>Spindle</b>			
Spindle Speed max. (rpm)	4,000	3,000	2,800
Spindle Nose	A2-6	A2-8	A2-11
<b>Turret</b>			
Type	VDI 30 DIN 1809	VDI 40 DIN 1809	VDI 50 DIN 1809
Number stations	12	12	12
Tool index time/adjacent (sec)	0.23	0.31	0.45
Driven tool speed (rpm)	5,000	4,000	4,000
Driven tool peak power (Kw)	4.6	6.6	6.6
Driven tool peak torque (Nm)	29.3@1,500rpm	42@1,500rpm	42@1,500rpm
<b>Further details</b>			
Machine weight (kg)	4,400	5,500	7,600

Further information and technical data on the product, see [www.hurco.co.uk](http://www.hurco.co.uk).  
Machines shown with options. Prices and information may change without notice.

# Max 5

Lathe control

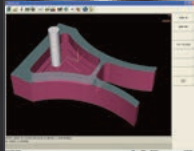
- > faster from drawing to finished part
- > shortest learning curve
- > fastest programming
- > intuitive operation
- > ergonomically designed



Sketch



Drawing



CAD/CAM



Desktop



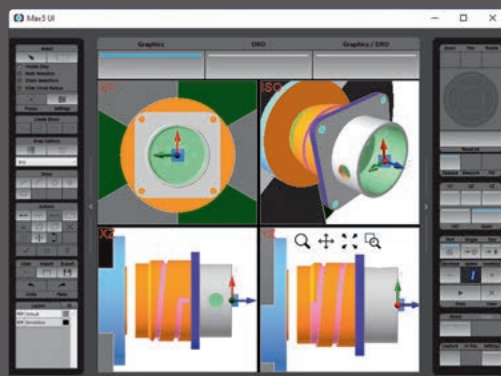
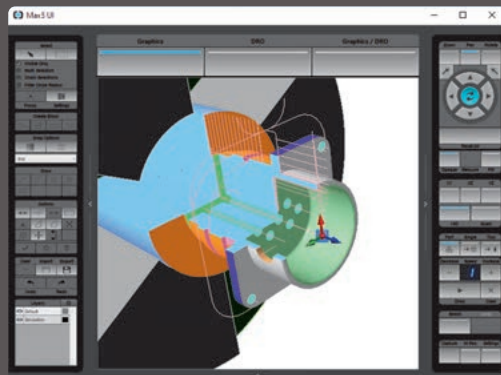
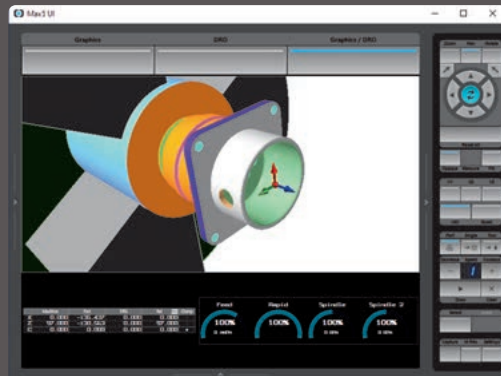
DXF File



All Hurco turning centres incorporate a multi-core CPU to allow concurrent programming capabilities and high resolution 3D graphic display. A minimum of 2.7GHz Pentium 4 processor with 4GB RAM and 128 GB Hard Drive supports the Windows operating system. All-digital internal communications and drives are able to respond precisely to the Ultimotion software, achieving 600 block look ahead and 2,277 block processing speed. Simple, easy to use interface accepts Hurco's popular Conversational, or Industry Standard NC programming as standard.

# Max 5 Lathe Control

## Faster from the drawing to the finished part



- > Interactive Touch Screen for conversational , NC programming and for graphical representation.
- > Program Management: User-centric archiving, by attached images and text search.
- > Adjustable ergonomically designed control panel.
- > Graphical program editing, fast program editing. Use the search function. Increases accuracy and allows rapid changes to the program.
- > Graphics allow the workpiece to be rotated to any angle or view. This displays the tool path and part geometry, including scaling workpiece size.
- > 3D simulation. Before running the program, tool movement can be tracked in real time 3D simulation.
- > Fault diagnosis. All programs, tools and program parameter errors are displayed.
- > ID/OD Profile Turning with face, turn, taper, arc, with blend arcs or chamfers between elements.
- > Grooving Cycles –chamfer, radius or square corners with ability to taper the groove walls from the on-screen menu.
- > Thread Cycle Blocks – inside or outside , parallel or tapered. Lead in and out angles, multi start, constant or decreasing depth of cut.
- > Ultimotion- improved surface finish and reduced cycle times.
- > Auto Tool Nose Radius Compensation
- > Diameter/Radius Programming Modes
- > CSS Constant Surface Speed
- > Bar Feed Cycle Blocks
- > Bar Puller Cycle Blocks
- > Cutoff Cycle Blocks
- > Drill Tip Compensation
- > Rigid Tapping with pecking
- > Thread Repair Blocks
- > Spindle Harmonic Control
- > Compute Estimated Run Time
- > Concurrent programming
- > Recovery Restart- NC and conversational
- > Linear broaching Blocks – TM Mi's only
- > Tool probing is a standard feature
- > 99 workpiece and tool offsets

**NEW Feature!**

**NEW Feature!**

**NEW Feature!**

**NEW Feature!**

**NEW Feature!**

**NEW Feature!**

### United Kingdom and Ireland

12 Merlin Centre  
Lancaster Road  
Cressex Business Park  
High Wycombe HP12 3TB  
Tel: (01494) 442222  
sales@hurco.co.uk  
www.hurco.co.uk

### South Africa

TH Machine Tools  
102 Chopin St Melodie A/H  
Hartbeespoort  
South Africa 0216  
Tel: +27 12 259 1375  
sales@thmachinetools.co.za  
www.thmachinetools.co.za

### Sweden

AB Nordiska Wemag  
Gottskarsvagen 150  
SE-43994 Onsala  
Sweden  
Tel: +46 300 302 90  
info@nordiskawemag.se  
www.nordiskawemag.se

### Israel

NR Automation  
Shenhav 9  
Neve Monoson  
60190 Israel  
Tel: 03-6342115  
www.n-r.co.il  
info@n-r.co.il

### Estonia and Finland

Venten OÜ  
Suur-Sõjamäe 50a  
11415 Tallinn  
Tel: +372 668 2321  
info@venten.ee  
www.venten.ee

### Greece

Ropi Machine Tools  
64B Vasilikon Str.  
18 540 PIRAEUS, Greece  
Tel: +30 210 413 1712  
Fax: 0030 210 4131714  
info@ropi-machines.gr  
www.ropi-machines.gr

### Egypt

Setra Egypt  
Professional Industrial Solutions  
Ordonia Buildings, Building 16,  
Office 1 Post No. 44466, Egypt  
Tel: +20 1001 82 1622  
Email: Yasser@setraegypt.com  
www.setraegypt.com

### Denmark and Norway

CNC-TECH ApS  
Rydskovvej 41, Rydskov  
5560 Aarup, Denmark  
Tel: +45 6488 1060  
Mobile: +45 3070 7220  
info@cnc-tech.dk  
www.cnc-tech.dk

## MACHINING CENTRES



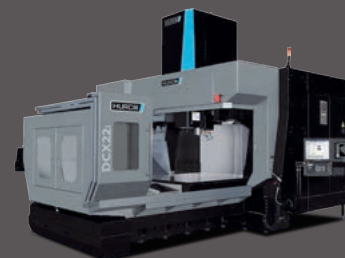
## TURNING CENTRES



## 5 AXIS



## DOUBLE COLUMN



## SUPERIOR CONTROLS

